

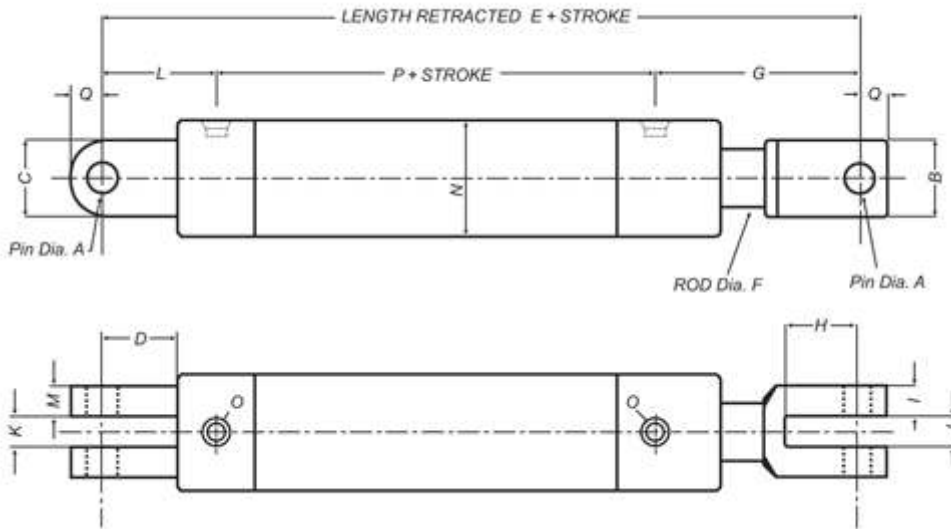
AG Series

Our AG Series offers the most affordable solution for your cylinder needs. Manufactured from high quality components they will provide years of trouble free operation.



- Available from 1/1/2" to 4" bore
- Screwed gland
- High quality honed barrel
- Slimline construction
- One piece piston
- SG Iron rod clevis (2" - 4" bore)
- K1045 clevis pins
- 1/1/4" pins available (4" bore only)

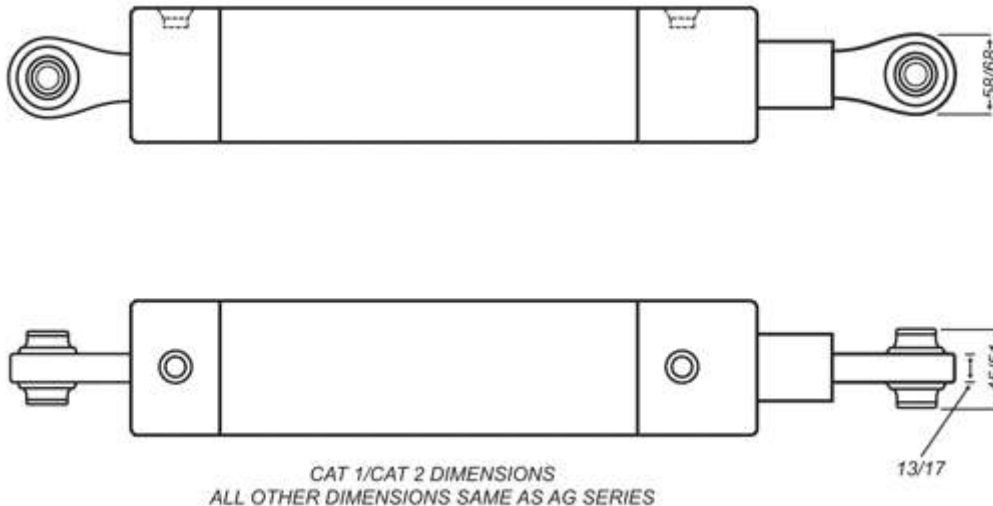
- One piece steel base end - lugs are not welded
- Suitable for both single and double acting operation



Top Link



This is the easy way to position implements on your tractors 3-point linkage. Based on the AG Series they are available in all bore and stroke lengths with either CAT 1 (3/4") or CAT 2 (1") pin sizes.



AG Cylinder Dimensions

Bore Diameter	1.50" 38.10mm	2.00" 50.80mm	2.50" 63.50mm	3.00" 76.20mm	3.50" 88.90mm	4.00" 101.60mm
A +0.15mm +0.20mm	0.75"	1.00"	1.00"	1.00"	1.00"	1.00"
	19.05	25.40	25.40	25.40	25.40	25.40
B	1.75"	2.10"	2.10"	2.10"	2.10"	2.10"
	44.45	53.34	53.34	53.34	53.34	53.34
C	1.65"	1.97"	1.97"	1.97"	2.56"	2.56"
	41.91	50.04	50.04	50.04	65.02	65.02
D	1.25"	2.00"	2.00"	2.00"	2.00"	2.00"
	31.75	50.80	50.80	50.80	50.80	50.80
E +/-3mm	9.5"	12.25"	12.25"	12.25"	12.25"	12.25"
	241.30	311.15	311.15	311.15	311.15	311.15
F	0.875"	1.25"	1.50"	1.50"	1.75"	1.75"
	22.23	31.75	38.10	38.10	44.45	44.45
G	3.50"	5.125"	5.125"	5.125"	5.125"	5.125"
	88.90	130.18	130.18	130.18	130.18	130.18
H	1.25"	2.125"	2.125"	2.125"	2.125"	2.125"
	31.75	53.98	53.98	53.98	53.98	53.98
I	0.46"	0.71"	0.71"	0.71"	0.71"	0.71"
	11.68	18.03	18.03	18.03	18.03	18.03
J	0.85"	1.125"	1.125"	1.125"	1.125"	1.125"
	21.59	28.58	28.58	28.58	28.58	28.58
K	0.84"	1.10"	1.10"	1.10"	1.10"	1.10"
	21.34	27.94	27.94	27.94	27.94	27.94
L	1.875"	2.75"	2.75"	2.75"	2.75"	2.75"
	47.62	69.85	69.85	69.85	69.85	69.85
M	0.48"	0.472"	0.625"	0.625"	0.787"	0.787"
	12.19	11.99	15.88	15.88	19.99	19.99
N	1.875"	2.375"	2.875"	3.500"	4.000"	4.500"
	47.63	60.33	73.03	88.90	101.60	114.30
O	9/16"	9/16"	3/4"	3/4"	3/4"	3/4"
	UNO	UNO	UNO	UNO	UNO	UNO
P	4.125"	4.375"	4.375"	4.375"	4.375"	4.375"
	104.78	111.12	111.12	111.12	111.12	111.12
Q	0.84"	0.95"	0.95"	0.95"	0.95"	0.95"
	21.34	24.13	24.13	24.13	24.13	24.13
R Rod Thread	0.75"-16	1.25"-12	1.25"-12	1.25"-12	1.25"-12	1.25"-12
	UNF	UNF	UNF	UNF	UNF	UNF
Seal Kit P/N	150-0875SS	200-125SS	250-150SS	300-150SS	350-175SS	400-175SS

Operating Pressure

All cylinders up to 48" stroke are rated to operate at 3,000psi (210 Bar). In some applications higher pressures are permissible and are dependant of bore, stroke and load. For pressure ratings above the standard recommended please consult our Engineering Department.

Cylinder Piston Speeds

Cylinders used in double acting applications have a maximum seal velocity of 500mm/sec. When used in single acting applications the maximum seal velocity is 200mm/sec. To maximise seal life we recommend that a small amount of oil be placed in the air side of the cylinder. The use of breather plugs is highly recommended as they assist in preventing the ingress of contamination into the cylinder. Running a hose from the air side back to the reservoir can further increase the cylinder life.

Warranty

Hydraulics Network cylinders are covered by a 12-month warranty. Warranty covers materials and manufacturing defects only. Warranty is not covered if the goods are dismantled or repaired by any other persons unless given written permission by the manufacturer. Binding of mounting pins can result in a bent or broken piston rod. The cylinder must have free movement on pins in any position. Worn pins can also cause binding, ensure pins are always in good condition. A bent or broken piston rod is not covered by warranty.